

2024 " "

2024 8

.....	2
.....	4
.....	5
.....	6
.....	12
.....	16
.....	19
.....	24
.....	26

“ ”

“ ”

GB/T 29467-2012

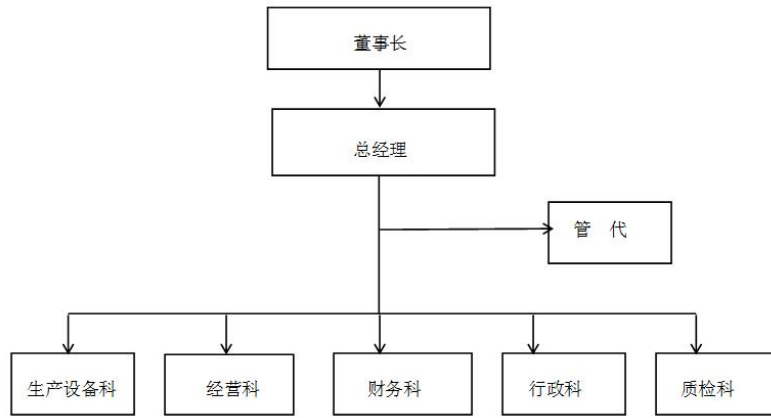
100

<

>

2014

3.1



— —

— —

- ---

3.2

3.2.1

"

"

1

95% 2

92

GB/T19580

KPI

3. 2. 2

PDCA

3. 2. 3

PDCA

3.3

APQP

FMEA

4.1

4.1.1

"

"

4.1.2

4.2

4.2.1

4.2.2

4. 2. 3

"

"

"

"

4. 2. 3

6

24 h

48 h

5.1

5.2

5. 3

I SO9001

I SO14001

I SO45001

"

"

"

"

5. 4

6.1

"

"

6.2

/

6.3

6.4

100%

7.1

7.1.1

7.1.2

7.2

7.2.1

7.2.2

7.3

1

2

3

- - -

1

2

" " " "

3

- - -

4

1

ISO9001

/

2